

Coronacrisis and the Czech Economy

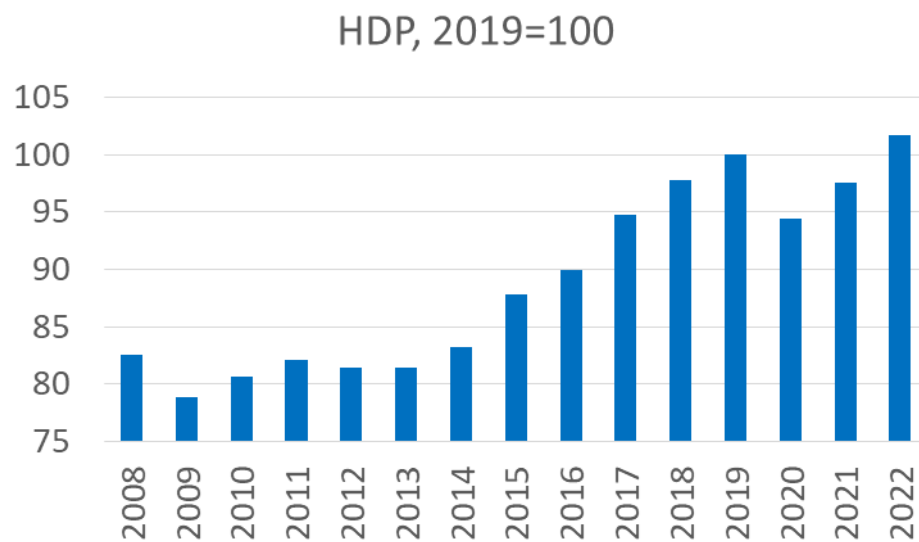
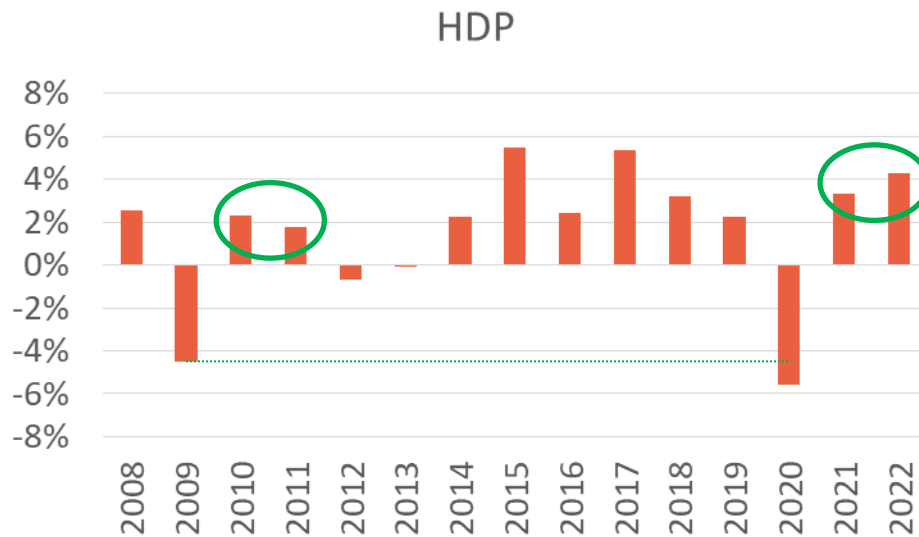
Michal Skořepa

Economist, Česká spořitelna

19 January 2021

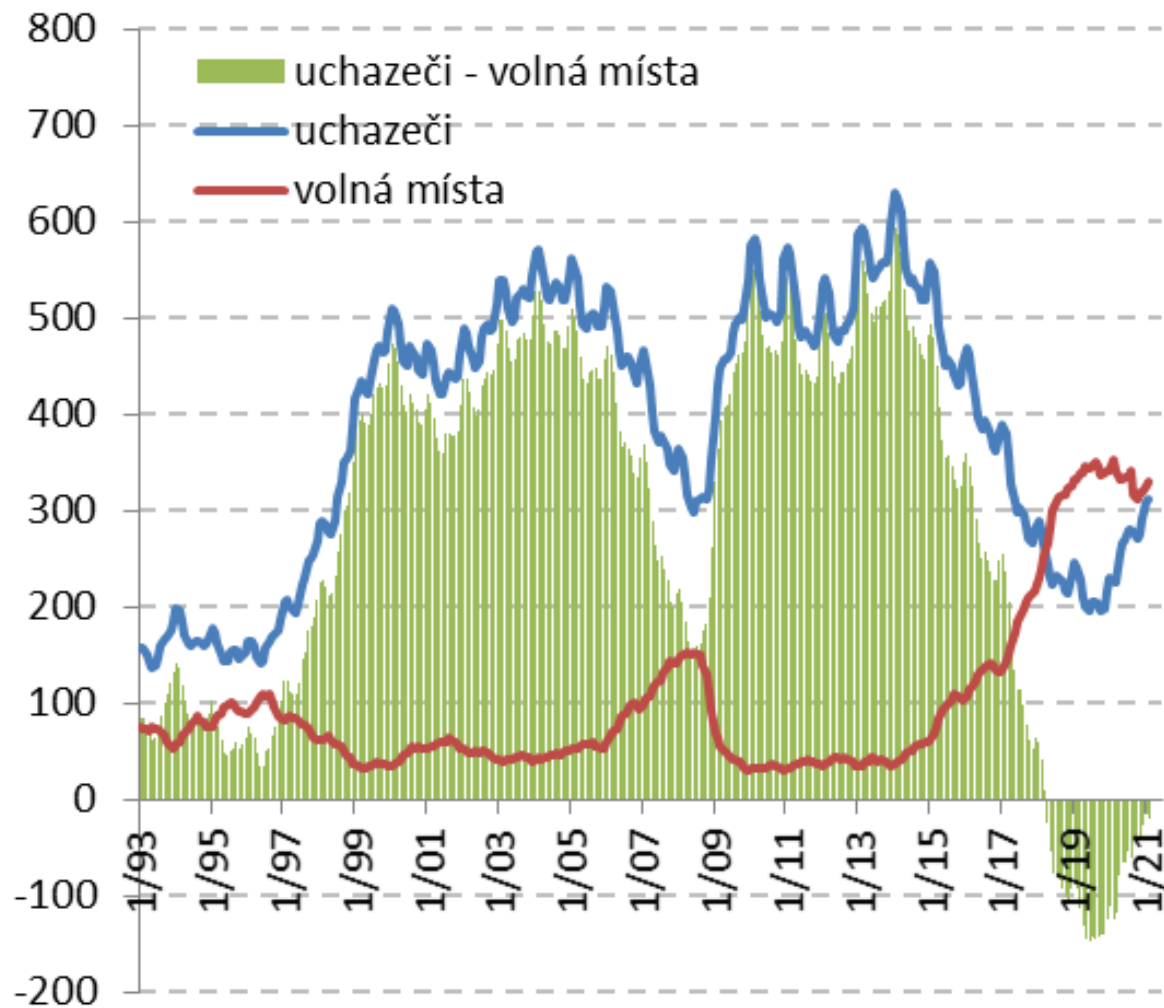
Celkový výkon ekonomiky

(mzr. růst, %; zdroj: ČSÚ, vlastní výpočet)

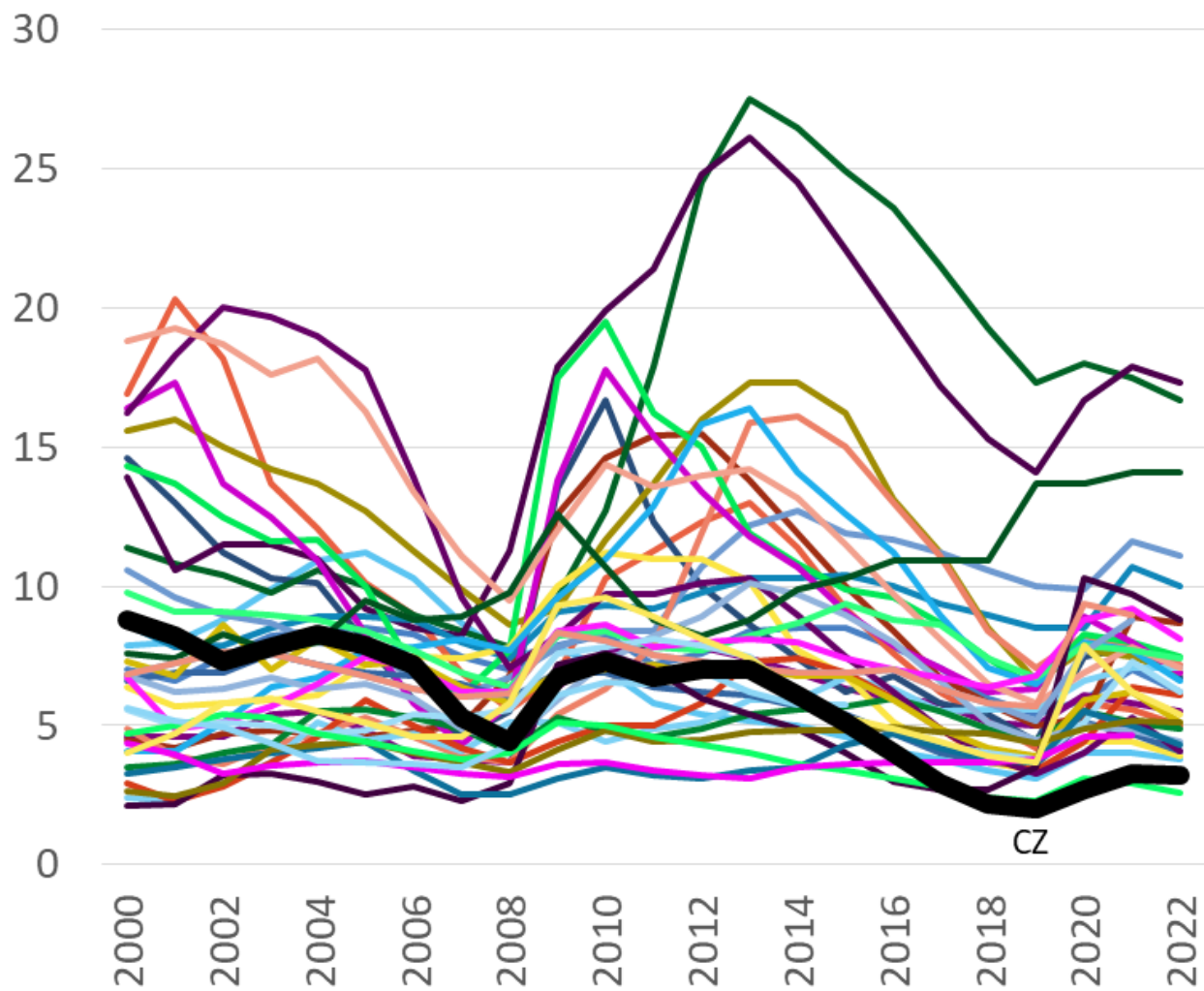


Trh práce

(tisíce; zdroj: ČSÚ, vlastní výpočet)

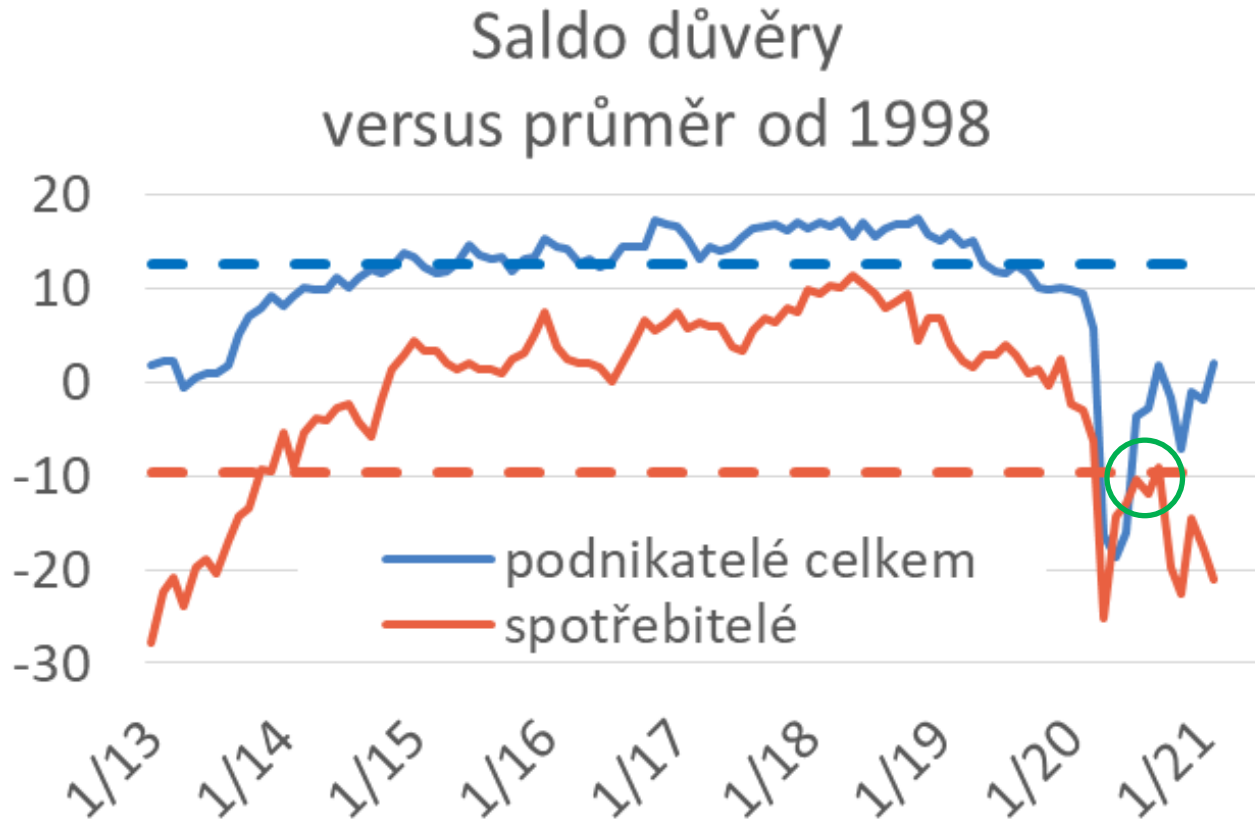


Míra nezaměstnanosti (%; zdroj: EK)



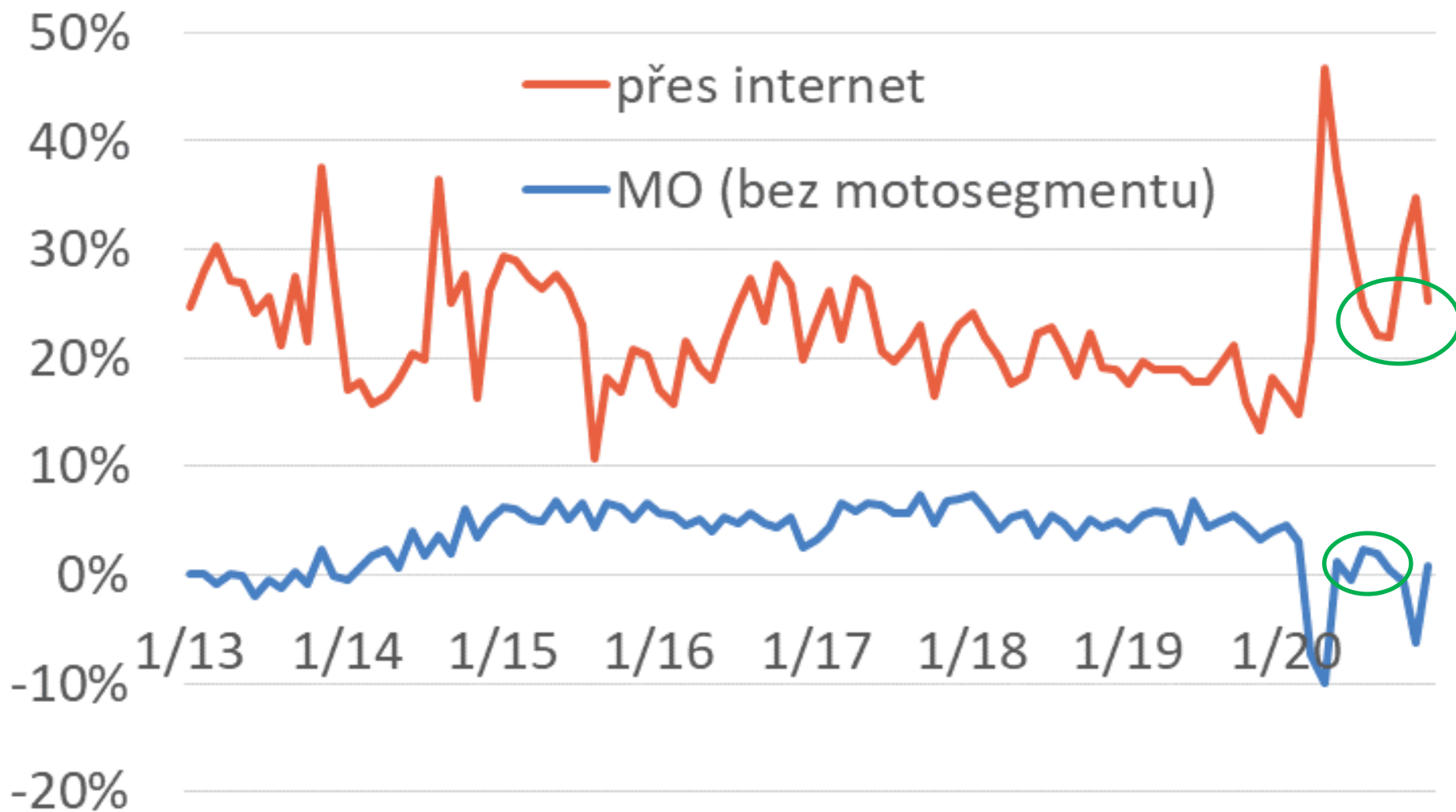
Nálada v ekonomice

(zdroj: ČSÚ, vlastní výpočet)

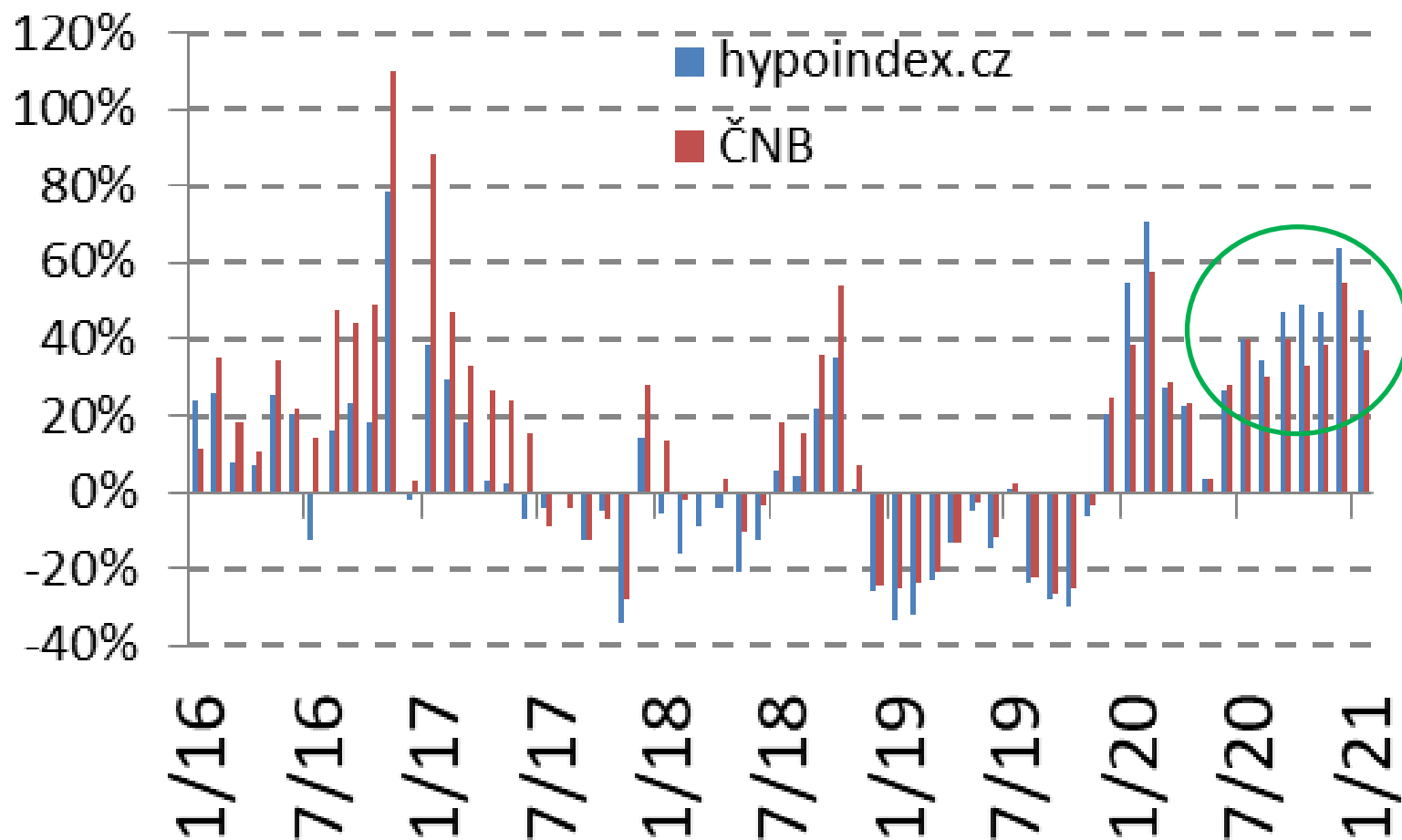


Maloobchodní tržby

(mzr. růst; zdroj: ČSÚ, vlastní výpočet)

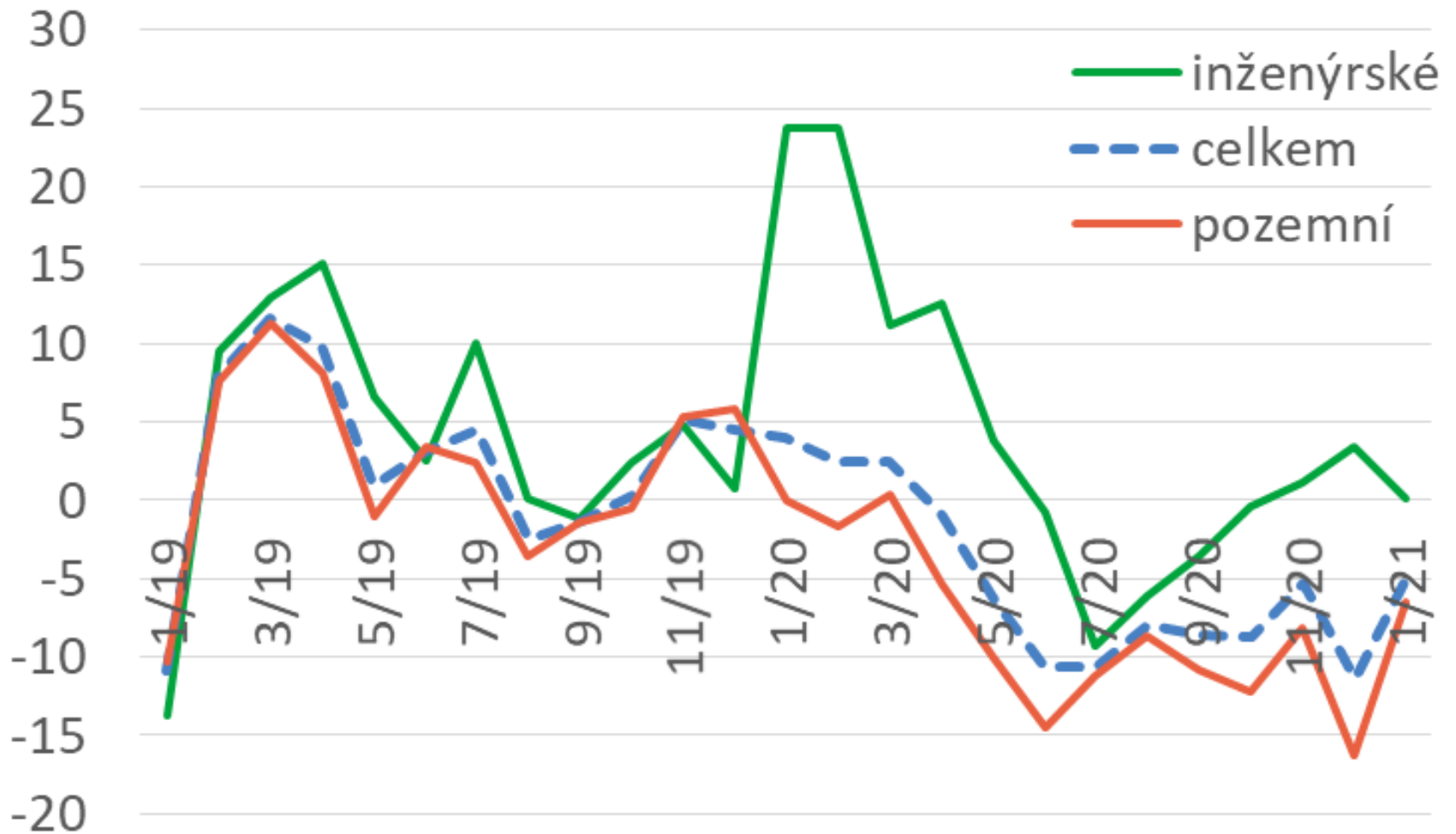


Objem čistých nových hypoték (r/r)



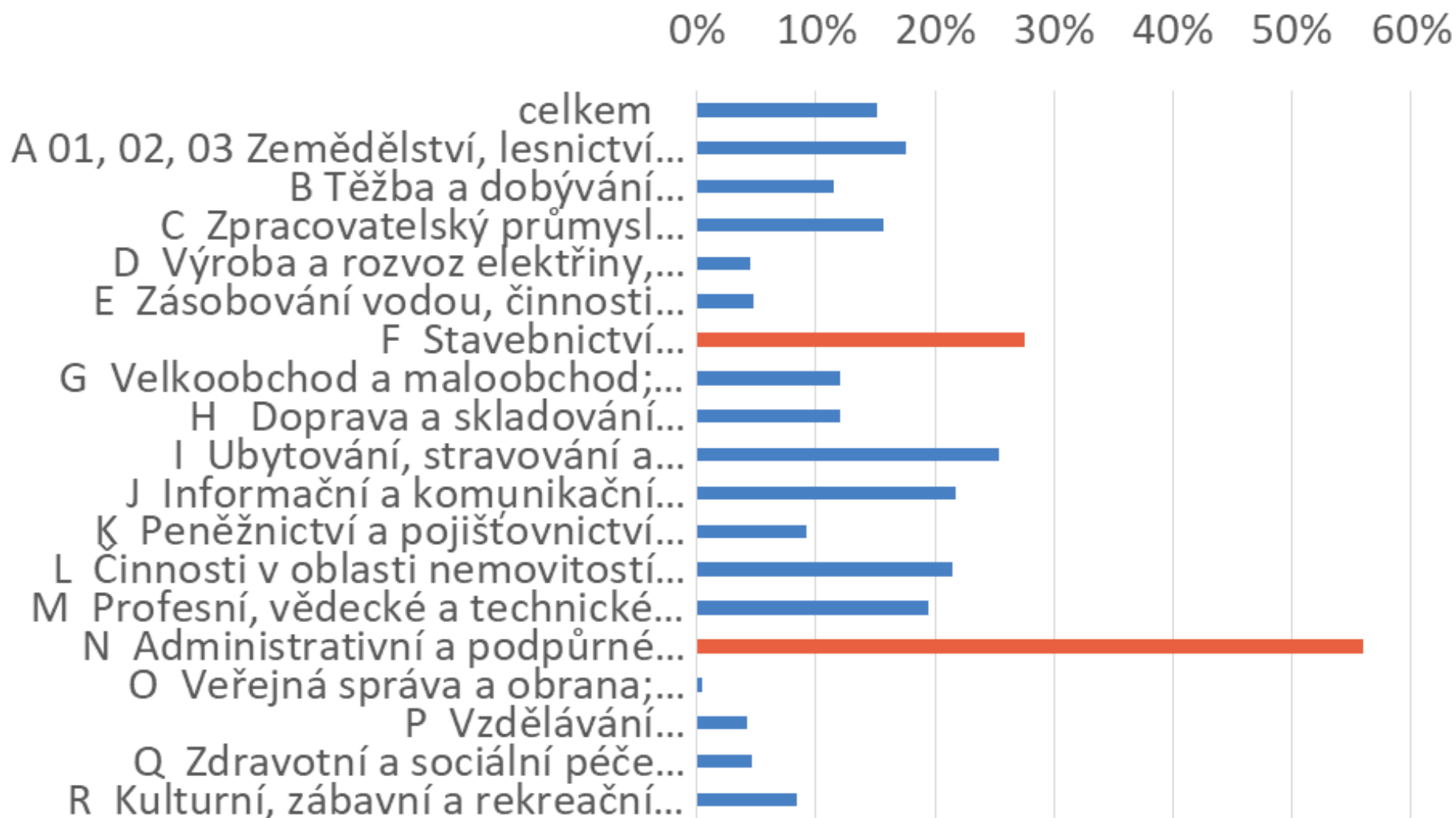
Stavební výroba

(mzr. růst, %; zdroj: ČSÚ, vlastní výpočet)



Podíl pracovníků ze zahraničí

(zdroj: ČSÚ, vlastní výpočet)



Děkuji za pozornost!



Michal Skořepa, PhD.

Ekonom, Česká spořitelna

Člen Výboru pro rozpočtové prognózy při NRR

mskorepa@csas.cz

blog.aktualne.cz/blogy/michal-skorepa.php

[linkedin.com/in/mskorepa](https://www.linkedin.com/in/mskorepa)



@Research_sporka

Průzkum názorů firem v Japonsku (Morikawa, 2021)

Figure 1 Mean productivity of WFH relative to the workplace

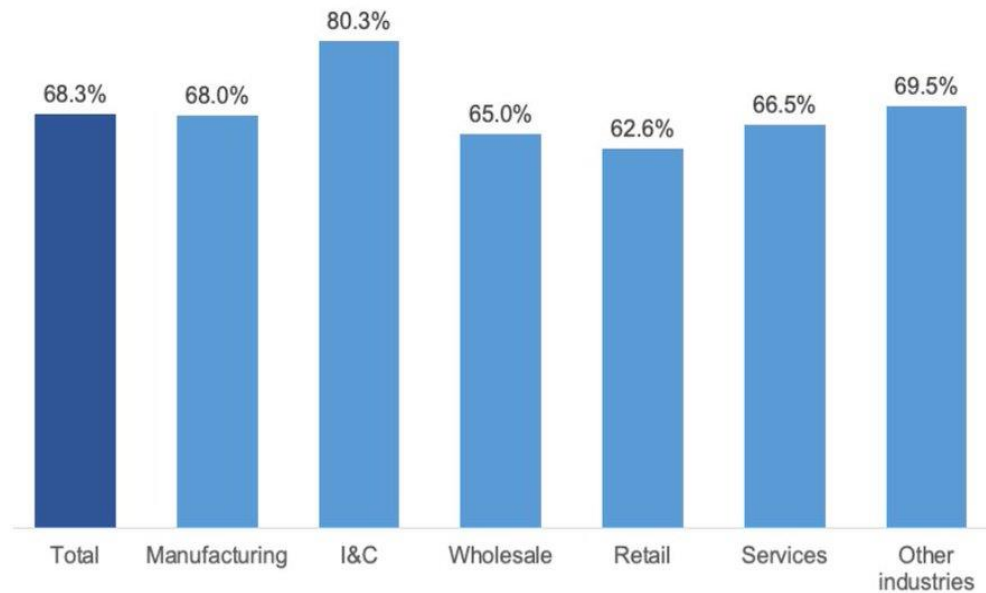


Table 2 Factors affecting adoption and productivity of WFH

Factors	Percentage
Poor <u>telecommunication environment</u> at home relative to the workplace	60.8%
The requirements by rules and regulations that <u>some tasks must be conducted in the office</u>	57.7%
Some types of work <u>cannot be completed at home</u> regardless of rules and regulations	76.1%
It is <u>difficult to concentrate</u> on work because of the presence of family members	33.0%
<u>Lack of a private room</u> specifically designed for work	36.9%
<u>Loss of quick communication</u> that is only possible through face-to-face interactions with their colleagues at the workplace	46.0%
<u>Lack of pressure</u> from the boss, colleagues, and subordinates	36.4%
Much of the work requires <u>direct interaction with customers</u>	34.3%
Other reasons	4.1%

Note: Multiple answers were allowed for this question.